

ATTRACTIONS

1 BEECH COURT GARDENS – Challock, Kent TN25 4DJ
Tel: 01233 740735 www.beechcourtgardens.co.uk
E-mail: info@beechcourtgardens.co.uk



Lying off the busy A252, an amazing vista awaits you as you enter these tranquil gardens. Landscaped after the war and specializing in rhododendrons, viburnums, climbing roses and hydrangeas, this makes for a colourful and interesting visit. Refreshments are served from the Oast House Tea Rooms. Silver Access award, children's trail and pet animals. Visit our church with modern murals, or Mr Hams' barn with his superb rural life collection.
OPEN: Daily from 20 March to 31 October 10.30am – 5.30pm (closed Fridays except for groups).

Groups welcome by appointment, we can seat 53 people.
ENTRANCE: Adults £5, OAPs £4.50, children £2, Groups £4.00

2 BELMONT HOUSE & GARDENS – Belmont Park, Throwley, nr. Faversham, Kent, ME13 0HH www.belmont-house.org
For further details, group tours and clock tours contact the administrator on Tel: 01795 890202 or E-mail: administrator@belmont-house.org

Belmont is an elegant 18th century house with views over Kentish parkland. Gardens include a pinetum complete with grotto, a walled ornamental garden and a kitchen garden with Victorian greenhouse. A yew lined walk leads to the pets' cemetery and the Fourth Lord Harris's cricket pitch. Its collections echo its



ownership by the Harris family since 1801 and include mementos of their travels and posts in India and Trinidad. The house was designed by Samuel Wyatt and includes many novel architectural details. In addition it has one of the most extensive collections of clocks in private hands in the country.
OPEN: House: April – September weekends and Bank Holiday Mondays, tours 2.15pm, 2.45pm and 3.30pm prompt. Weekday group tours by arrangement. Clock tours last Sat of every month (must be pre-booked). Gardens: all year round 10am – 6pm or dusk if earlier. ENTRANCE: House and gardens: adult £8, child £5 (under 12 free), concessions £7. Gardens only: adult £5, child £2.50 (under 12 free), concessions £4. Pre-book clock tour £15. Weekday groups (by arrangement) £7

3 BROGDALE COLLECTIONS – Brogdale Farm, Brogdale Road, Faversham, Kent ME13 8XZ Tel: 01795 536250
www.brogdalecollections.co.uk
E-mail: enquiries@brogdalecollections.co.uk



Brogdale Farm is home to the National Fruit Collections, the largest collection of fruit trees and plants in the world. More than 2,300 different varieties of apple, 550 of pear, 350 of plum, 320 of cherry and smaller collections of bush fruit, nuts and grapes are grown here in 150 acres of

beautiful orchards. Your Orchard Pass allows you to enjoy unlimited tours for one year. Our guides will show you the most interesting and attractive parts of the orchards and give tastings of fruit in season. For further details on group tours, festivals, events, meeting room hire and reception venue visit our website or call.

OPEN: Daily: Easter – Oct 10am – 5pm, Nov – Easter 10am – 4.30pm
ENTRANCE: Orchard Pass: Adult £10.00, Concessions £8.50, Child £5.50, Family £25.50 (excluding festivals). Group discount available. No guided tours Nov – Mar. Groups must pre-book

4 CHART GUNPOWDER MILLS – off Stonebridge Way, Faversham, Kent ME13 7SE Tel: 01795 534542 E-mail: ticfaversham@btconnect.com
www.faversham.org/history/chartmills.asp

Oldest of their kind in the world, Chart Gunpowder Mills laid the foundations for Britain's greatness. They made powder for Nelson at Trafalgar and Wellington at Waterloo. In peacetime their product blasted routes for the nation's network of railways and canals. Restored and managed by the Faversham Society.
OPEN: 2 – 5pm Sat, Sun & Bank Holidays April – October Easy walking distance from the town centre and station.

ENTRANCE: Free



5 CREEK CREATIVE – 1 Abbey St, Faversham, Kent ME13 7BE
Tel: 01795 535515 (office hours) www.creek-creative.org
E-mail: info@creek-creative.org



Creek Creative is an art and design community hub and not-for-profit company based in an extensive former Victorian brewery near Faversham Creek. We offer affordable rented studios, project space, event facilities, training workshops and full or half day courses (daytime, evening or weekends). Public galleries to hire for art and/or design exhibitions – weekly bookings (open Thursday to Sunday), individual and group shows welcome (subdivision/curation by arrangement).

OPEN: The gallery, café & shop are open from Tuesday – Sunday 10 – 4pm
ENTRANCE: Free

6 DODDINGTON PLACE GARDENS – Doddington, Kent ME9 0BB
Tel: 01795 886101 www.doddingtonplacegardens.co.uk

Doddington Place is surrounded by wooded countryside in an area of outstanding natural beauty. The lovely landscaped gardens are set in the grounds of an imposing Victorian mansion and cover 10 acres. With falconry displays at 3pm, special event days (see website for details) and a tea room serving delicious homemade fare, Doddington Place Gardens is a wonderful day out for all the family.

OPEN: Sundays, Wednesdays and Bank Holidays from 1st April – 30th September 11am – 5pm
ENTRANCE: Adults £5, Children £2, group bookings welcome by arrangement



ATTRACTIONS

7 FARMING WORLD – Nash Court, Boughton, Kent ME13 9HY
Tel: 01227 751144 www.farming-world.co.uk
E-mail: info@farming-world.co.uk



There's so much to do at Farming World. You can meet the rare breeds and heavy horses, watch a birds-of-prey flying demonstration (not Mondays), play mini golf, let off steam in the adventure play areas or indoor soft play area, bounce on the huge inflatable pillow (weather permitting), make a souvenir in the craft room, visit the bee room, lawn mower museum and sensory garden. There are also plenty of special events planned throughout the year.



For further details of other facilities at the farm, special events, opening times and entrance costs visit www.farming-world.co.uk or call (01227) 751144

8 FAVERSHAM POOLS – Central Car Park, Leslie Smith Drive, Faversham, Kent ME13 8PW Tel: 01795 532426
www.favershampools.com

Located in the centre of the town, Faversham Pools offers year-round swimming with the added summer-time bonus of three fantastic outdoor pools, all available from May to September. The heated outdoor pools are pleasantly warm and popular with children and families, who sunbathe and picnic on the grass nearby. Refreshments are available from the café. The indoor pools and jacuzzi are open all year; activities include swimming lessons, aqua aerobics, aqua natal classes, children's water confidence classes, private parties, aquababes, early bird swimming, and fun sessions with floats and inflatables.



OPEN: For details on opening times and programmes go to www.favershampools.com, then select Things To Do

9 FLEUR DE LIS HERITAGE CENTRE – 11 – 13 Preston Street, Faversham, Kent ME13 8NS Tel: 01795 534542
www.faversham.org/society E-mail: ticfaversham@btconnect.com



For old and young alike, the Fleur de Lis museum is full of surprises and delights. Take your seat on a powder keg to watch the story of Faversham's century long explosives industry. Discover an old time schoolroom and Victorian kitchen, or wonder how anyone ever managed to ride the penny-farthing bicycle in the sports section. There's a reminder of long gone

High Street shops, a working telephone exchange and a superb late Georgian shop front set in a Georgian garden. Leave time to browse the centre's unique bookshop focussing on Kent and its immediate neighbours

OPEN: Mon – Sat 10am – 4pm, Sun 10am – 1pm

ENTRANCE: £3, concessions £1.50

TOWN HERITAGE WALKS: Guided tours every Sat from Easter to Oct, £3.50

10 GROW AT BROGDALÉ – Brogdale Farm, Brogdale Road, Ospringe, Kent ME13 8XZ Tel: 01795 531888
www.brogdaleonline.co.uk E-mail: fruit@brogdaleonline.co.uk

Faversham's garden centre, Grow at Brogdale, is based at Brogdale Farm, home of the National Fruit Collection. All you need for a garden good enough to eat, we specialize in fruit and vegetable growing, and supply seeds, plants, trees, tools and all the accessories for successful crops. With the courses here at the new centre we can help equip you with skills to beat the credit crunch and produce some of your own food in even the smallest spaces.

OPEN: Mon – Sat, 10am – 5pm, Sunday 10am – 4pm



macknade
fine foods



11 MACKNADE FINE FOODS – Selling Road, Faversham, Kent ME13 8XF Tel: 01795 534497 www.macknade.com

Macknade Fine Foods has been at the forefront of the independent, specialist food and drink world since 1979. A leading farm shop and food hall packed to the rafters with an astounding range of local produce and worldwide exotica, drawing food lovers from far and wide. The Macknade site also includes our Italian cafe serving Kent blended teas, as well as Hercules Independent Wine Warehouse, Herman's Plaice fish monger, Tasteful Plants specialist plant centre, and Macknade Collector's Village, all with easy access and large car park.

12 MAISON DIEU – Ospringe Street (Main A2), Faversham, Kent ME13 8TW Tel: 01795 534542 E-mail: ticfaversham@btconnect.com
www.faversham.org/visitors/dieu.asp

This picturesque 13th century building is almost all that remains of a medieval mini-monastery which provided overnight accommodation for Canterbury pilgrims and royalty on their way to and from the Continent. Since 1925 it has been a village museum – the oldest in the country – with fine Roman finds on display. See a building which was familiar to Chaucer, Marlowe and Shakespeare.

OPEN: 2 – 5pm Sat, Sun and Bank Holidays April – October

ENTRANCE: Small admission charge. English Heritage members free



ATTRACTIONS

13 MOUNT EPHRAIM GARDENS – Hernhill, Kent ME13 9TX
Tel: 01227 751496 E-mail: info@mountephraimgardens.co.uk
www.mountephraimgardens.co.uk



Mount Ephraim Gardens provide the perfect setting for a relaxing day out. Unwind in our 10 acres of gardens, set in the heart of an 800-acre estate with magnificent views over the Swale. Whether you choose to enjoy the tranquillity of the Japanese gardens, take on the challenge of our grass maze or just relax on the Edwardian Tea Room terrace

overlooking the topiary and herbaceous border, Mount Ephraim Gardens are a must for the whole family. Delicious homemade lunches, cakes and traditional teas are available from our new Woodrose Tea Room.

OPEN: Easter Sun to end September, Wed to Sun 12 noon – 5pm (last entry). Bank Holidays 11am – 5pm.

Groups March to October daily

ENTRANCE: Adults £5, group price per person £4.50, Child (3 – 16 yrs) £2.50

14 OARE GUNPOWDER WORKS COUNTRY PARK – Faversham, Kent ME13 7UB Tel: 01634 855166
E-mail: gkm@groundwork.org.uk www.gunpowderworks.co.uk

Gunpowder was produced at Oare for 300 years until 1934 and visitors can follow this history through displays and models at the Visitor Centre, where they can also learn about the extensive wildlife interest of the site. Outside, ten external information boards guide visitors along a waymarked walk. School visits, holiday activities and guided tours are available by arrangement. Friends Group.



OPEN: Visitor Centre: weekends and Bank Holidays 10.30am – 4.30pm, April – November inclusive

CAR PARK: above times plus 9am – 5pm weekdays all year round

ENTRANCE: Free



15 SANDHURST FARM FORGE – Seed Road, Newnham, Kent ME9 0NE Tel: 01795 886854
www.sandhurstfarmforge.co.uk
E-mail: hammer.tongs@btinternet.com

Charlie Dickinson is a third generation blacksmith using more than 30 years' experience forging functional and sculptural ironwork to a high standard of workmanship and artistic flair. Gallery and commissioned work.

OPEN: Monday – Friday 9am – 5pm, Sat 9am – 12 noon, Sun closed



16 SHEPHERD NEAME BREWERY TOURS – Court Street, Faversham, Kent ME13 7AX Tel: 01795 542016
www.shepherdneame.co.uk

enjoyEngland® Small Visitor Attraction of the Year

Take an award-winning guided tour of Shepherd Neame – Britain's oldest brewer. Your guide will take you through the heart of the brewery and explain how beer is made. En-route you can see the traditional mash tuns, taste natural mineral water from the brewery's well, try some malted



barley, smell locally-grown Kentish hops, see bygone delivery vehicles and step into a recreated cooper's workshop. A popular tutored tasting completes the tour. Learn how our Master Brewers assess every batch of beer (audience participation encouraged!). Tours run most days – advance booking strongly recommended. The brewery is also a great venue for a wedding, dinner or party!

OPEN: For details of shop opening times and tour availability please call the booking line, 01795 542016, or visit www.shepherdneame.co.uk



17 SHRINE OF ST JUDE – Whitefriars, Tanners Street, Faversham, Kent ME13 7JN
Tel: 01795 539214
www.stjudeshrine.org.uk

E-mail: chaplain@stjudeshrine.org.uk

The National Shrine of St Jude, one of the Apostles and the patron of difficult cases, is beside the church of Our Lady of Mount Carmel. The shrine was built in 1955 and people travel great distances from within the UK and abroad to visit the shrine and pray.

18 THAMES SAILING BARGE GRETA – Contact Skipper Steve Norris on

Tel: 07711 657919 or 01795 534541

www.greta1892.co.uk

E-mail:

admin@greta1892.co.uk

Arrange a day out with a difference and enjoy a trip on the Thames Sailing Barge Greta. Greta is available for daily, weekend or full week charters and static functions.



WHERE TO STAY

ACCOMMODATION GRADING

All accommodation providers have either obtained a grading to a nationally recognized standard or are in the process of doing so. Grading enables users to know with confidence that the accommodation they select offers defined standards of facilities. Relevant grading is shown within each listing. All accommodation offered is non-smoking.

In addition, some Faversham area accommodation providers and attractions have gained accreditations with the Green Tourism Business Scheme, for tourism businesses committed to environmental good practice. Those providers are indicated by the green tourism logo shown here.



Mouse logo denotes accommodation providing internet access



19 BRENLEY FARMHOUSE B&B – Maggie Berry, Brenley Farmhouse, Brenley Lane, Boughton, Kent ME13 9LY ★★★★★
Tel: 01227 751203 www.brenley-farm.co.uk
E-mail: info@brenley-farm.co.uk
A warm welcome at a working farmhouse set amid hop gardens, orchards and paddocks. Spacious, comfortable, well equipped, ensuite rooms. Delicious breakfasts using home grown and local produce.
TARIFF: Double/twin £80 – £90; family suite (two bedrooms) from £110; single £45 – £55. All rooms ensuite



22 COURT LODGE B&B – Dennis and John Wheeldon, Church Road, Oare, Kent ME13 0QB ★★★★★
Tel: 01795 591543 or 07794 687041
www.faversham.org/courtlodge
E-mail: d.wheeldon@btconnect.com
Beautiful 16th century listed farmhouse, recently lovingly restored, with over an acre of gardens set in a rural location with stunning views. Ideal for walking, birdwatching, etc. Excellent pubs nearby. About one mile west of Faversham, approx 10 miles from Canterbury. Ample Parking.
TARIFF: Double £70, single £50



25 JUDD'S FOLLY HOTEL – ★★
Jason Wolverson, Syndale Park, Ospringe, Kent ME13 0RH Tel: 01795 591818
www.juddsfollyhotel.co.uk
One mile outside Faversham, set in three acres of parkland with stunning views over the Swale. Thirty ensuite bedrooms and three conference rooms. Freeview TV, hospitality trays. Convenient for Canterbury, Whitstable and ferry ports. Ideal for walking, cycling and other leisure activities.
TARIFF: Single BB from £47.50, double/twin from £57.50, family and superior rooms from £67.50



20 CHURCH OAST B&B – Jill & Brian Geliot, Hernhill, Kent ME13 9JW ★★★★★
Tel/Fax: 01227 750974 www.churchoast.co.uk
E-mail: jill@geliot.plus.com
Beautiful converted oasthouse in quiet, picturesque village. Well equipped, comfortable rooms, guest lounge with TV. Varied breakfast menu using local produce. Evening meals at nearby pub.
TARIFF: 3 rooms (family, double and twin) all with ensuite or private facilities. Double or twin 1 night £80, 2+ nights £70 per night. Family from £100. Single occupancy £40-50



23 FAIRLEA B&B – David Fairlie, 27 Preston Avenue, Faversham, Kent ME13 8NH ★★★★★
Tel: 01795 539610 www.fairleabandb.co.uk
E-mail: info@fairleabandb.co.uk
A family home with a tasteful new annexe, completely separate from the main house, offering comfort and privacy. Situated in a quiet tree-lined avenue within walking distance of the station (approx 8 minutes) and the town centre with its historic and picturesque buildings.
TARIFF: Double/twin £70, single £40, single occupancy of double/twin £50



26 LEAVELAND COURT – Mrs Corrine Scutt, Leaveland, Kent ME13 0NP ★★★★★
Tel: 01233 740596
www.leavelandcourt.co.uk
E-mail: info@leavelandcourt.co.uk
Set in secluded and spacious gardens, Leaveland Court is an enchanting 15th century farmhouse offering the modern comforts of ensuite rooms with old world charm. A warm welcome is assured and many of our guests return year after year to repeat the experience. Closed December & January.
TARIFF: Twin/double £70-£80, single £40-£45



21 COT HOY SELF-CATERING – Ray & Betty Huntley, Buckland, Kent ME13 0TP ★★ Tel: 01795 537514
E-mail: raymondhuntley@btinternet.com
Comfortable, well equipped annexe to a Victorian country house set in six acres of lawns and woodlands near to Faversham and the village of Oare. Good parking, own entrance, sleeps 2. Ideal for exploring Kent countryside. By car 5 minutes from A2 and 20 minutes from Canterbury.
TARIFF: £250 per week, weekends £140 for 3 nights.



24 GLADSTONE HOUSE B&B – ★★★★★
Mary Mackay, 60 Newton Road, Faversham, Kent ME13 8DZ Tel: 01795 536432 or 07921120512 www.gladstone-guesthouse.com
E-mail: maryjmackay@hotmail.com
A warm Irish welcome awaits at this comfortable, quiet Victorian town house close to Faversham station and the town centre. Breakfast in the conservatory, Fairtrade used where possible. All dietary requirements catered for with prior notice. Certificate of Excellence from Trip Advisor.
TARIFF: 2 double, 2 twin, double/twin £75, single £50



27 MARCH COTTAGE – Mrs Sarah Moss, 5 Preston Avenue, Faversham, Kent ME13 8NH ★★★★★ Tel: 01795 536514
www.marchcottagebandb.co.uk
E-mail: sarah@marchcottagebandb.co.uk
Family run, ground floor accommodation, only eight minutes walk from Faversham town centre. Situated in a quiet road with ample parking. Within 15 minutes driving of Canterbury, Whitstable and the coast. Free WiFi.
TARIFF: Double (ensuite) £65, twin (ensuite) £65, single occupancy £42.



WHERE TO STAY



28 THE OLD VICARAGE – Claire Finley, Church Hill, Doddington, Kent ME9 0BD
Tel: 01795 886136
E-mail: claire@oldvicaragedoddington.co.uk
★★★★ AA Guest Accommodation Highly Commended. Beautifully renovated Grade II listed property, dating back to 1656, in peaceful rural location on the edge of Doddington village in a designated area of natural beauty. Three comfortable, double ensuite rooms, full English breakfast. Credit cards accepted.
TARIFF: Double from £79 per room, single occupancy from £55



29 PALACE FARM HOSTEL – Graham & Liz Cuthbert, Palace Farm, Doddington, Kent ME9 0AU ★★★★★ Tel: 01795 886200
www.palacefarm.com
E-mail: info@palacefarm.com
Flexible hostel style B&B on family farm in village with pub. Ten en-suite rooms including twins and doubles. Kitchen, lounge/dining and drying room. Beautiful countryside, good walking and cycling. Card payment accepted.
TARIFF: From £20 pp pn, children £16, + £4 single occupancy. Special room prices, see website or call.



30 PENINSULAR TERRACE AT THE BLACK LION – David Townsend, Lynsted, Kent ME9 0RJ ★★★★★
Tel: 01795 521229
E-mail: david.townsend@engineer.com
Fully air conditioned, self-contained mews maisonettes attached to the best pub in the village, the Black Lion – a fine example of a Jacobean Kentish pot-house. Convenient for Faversham, Whitstable, Canterbury, Medway Towns, the Channel ports and the Eurotunnel.
TARIFF: From £60 per night double occupancy, £50 per night single occupancy



31 RAILWAY HOTEL – Preston Street, Faversham, Kent ME13 8PE ★★★★★
Tel: 01795 533173
www.railwayhotelfaversham.co.uk
E-mail: railway_hotel@btconnect.com
Traditional, family-run, Victorian railway hotel opposite Faversham station. All rooms ensuite with TVs, DVD players, tea & coffee facilities and free WiFi. Freshly prepared Full English breakfast included. Regularly features in CamRA Good Beer and Good Pub Guides. Separate restaurant (Tues-Sun). Car park. Dogs by arrangement.
TARIFF: Double/twin from £75, single from £40



15 SANDHURST FARM FORGE – Kate Dickinson, Seed Road, Newnham, Kent ME9 0NE ★★★ AA Guest Accommodation
Tel: 01795 886854
www.sandhurstfarmforge.co.uk
E-mail: rooms.forge@btinternet.com
A converted stable block on a blacksmith's forge. Centrally heated ensuite rooms. Satellite TV/DVD, tea & coffee, hairdryer, ironing facilities. Where possible breakfast is locally sourced with homemade bread and jams, or using Fairtrade products. Card payments accepted.
TARIFF: Twin/double £75, single £45



32 SUN INN – West Street, Faversham, Kent ME13 7JE ★★★ Tel: 01795 535098
Fax: 01795 535322 www.sunfaversham.co.uk
E-mail: thesun@shepherdname.co.uk
Traditional ale house situated in the conservation area of Faversham, with a wealth of old beams and an inglenook fireplace. Locally sourced traditional fare for lunch and dinner in separate restaurant. Centrally located, and with eight ensuite bedrooms it is a perfect place to stay when visiting Faversham. Prices include breakfast.
TARIFF: Twin/double B&B from £75, single B&B £65



33 SYNDALE LODGE B&B – David & Sally Willis, Syndale Park, London Road, Faversham, Kent ME13 0RH ★★★★★
Tel: 01795 531488 www.faversham.org/visitors
E-mail: sallyfarley18@yahoo.com
Beautiful Canadian solid cedar house set in gorgeous parkland close to Faversham centre. Two spacious, comfortable double rooms with ensuite bathrooms and digital TV. Delicious breakfasts using local produce; special diets catered for with notice. Children welcome.
TARIFF: Twin/double from £70, single from £45



34 TENTERDEN HOUSE – Prudence Latham, 209 The Street, Boughton, Kent ME13 9BL ★★★
Tel: 01227 751593 E-mail: platham@tesco.net
www.faversham.org/tenterdenhouse
This "Historic Building of Kent" offers a double and a twin in the old gardener's bothy, which can be used as a self-contained cottage for families, or two separate ensuite rooms. Traditional English breakfast in the main house. Off-road parking. Restaurants and pubs in easy walking distance. TV and tea/coffee facilities.
TARIFF: Doubles from £70, singles from £55



35 UPLEES FARM – Chris & Heather Flood, Uplees Road, Oare, Kent ME13 0QR ★★★★★
Tel: 01795 532133 www.upleesfarm.com
E-mail: hfflood@tiscali.co.uk
Relax and enjoy our family run sheep farm located in the Kent countryside in peaceful surroundings. Excellent, comfortable and well equipped accommodation with plenty of parking. Ideal for visiting the area and enjoying many lovely walks.
TARIFF: Sleeps 4 – 6 (4adults, 2 children) from £320 – £560, short breaks 2 – 3nights, 2 people £195, 4 – 6 people £225



36 WHITE HORSE INN – Boughton, Kent ME13 9AL ★★★★★
Tel: 01227 751343
E-mail: whitehorseinn@live.co.uk
www.whitehorsecanterbury.co.uk
This 15th century inn offers stylish hotel rooms, fine Kentish ales, locally sourced modern British cuisine and an excellent Sunday lunch. Well located for Canterbury, the coast, fast train to London and the channel ports. We welcome families, walkers and dogs.
TARIFF: Double/twins from £62.95, singles from £54.95, family suites from £139.95 – all ensuite



FAVERSHAM FOOD & DRINK



37 ALBION TAVERNA – 29 Front Bents, Faversham ME13 7DH
Tel: 01795 591411
www.albiontaverna.com
E-mail: info@albiontaverna.com
Experience the exciting colours and flavours of Mexican and English cuisine in the waterfront setting of historic Faversham. Freshly prepared, home cooked food with something to suit all the family. Gareth Finney and Dan Sidders, who run

this sizzling restaurant, are proud of making everything fresh – from the refried beans and salsa to the guacamole.

38 THE ANCHOR INN – Abbey Street, Faversham ME13 7BP
Tel: 01795 536471
E-mail: theanchorinnfav@btinternet.com
www.theanchorinnfavsham.com

The Anchor Inn nestles at the bottom of Faversham's Abbey Street – one of the finest preserved medieval streets in England. Shepherd Neame's finest ales are served alongside traditional pub food at this beautiful 300 year old pub which is a short stroll from Faversham's market place and very close to the historic Faversham Creek.



39 THE CARRIAGE RESTAURANT at The Railway Hotel, Preston Street, Faversham ME13 8PE
Tel: 01795 531790
www.railwayhotelfaversham.co.uk



Newly re-opened restaurant under the management of Head Chef Clare Brown. Freshly prepared, wholesome, home-cooked food using local seasonal produce. Can cater for all dietary requirements. Open Wednesday to Saturday. Lunch 12.00 – 2.30 & Evenings 6.00 – 9.30 & Sunday Lunch served 12 – 2.30.



40 THE COURTYARD RESTAURANT CAFÉ – Brogdale Farm, Brogdale Road, Ospringe, Kent ME13 8XZ
Tel: 01795 530013
E-mail: info@courtyard-brogdale.co.uk
Ideal for morning coffee, light lunches or afternoon tea; set in the beautiful home of the National Fruit Collections. Complete your trip with a visit to the range of Market Place shops.

Open daily all year round.

41 THE ELEPHANT – The Mall, Faversham, Kent ME13 7JN
Tel: 01795 590157

Voted the Campaign for Real Ale's East Kent pub of the year 2010, and Swale CamRA pub of the year for the last four years. The only pub in Faversham making true use of its freehouse status, many ales are sourced locally earning it CamRA's LocAle accolade. Cask Marque has inspected and approved the quality of beer and ales served. With an open fire, music most weekends, an enclosed garden and function room we say, "Love beer? love the Elephant!"



42 OSSIE'S FISH BAR – 2 Preston Street, Faversham, Kent ME13 8NS
Tel: 01795 590107
E-mail: ossiesfishbar@btinternet.com
Find us on faversham.org

One of the top five fish and chip shops in the London and Southeast Seafish Competition 2007. Located in the heart of Faversham, Ossie's is the only fish and chip shop in town open all day, providing you with fresh, quality ingredients, good service, good value and great food including healthier option fish cooked on the griddle. Open Mon-Sat 11am-10.30pm, Sun 12-9pm.

43 THE PHOENIX TAVERN – Abbey Street, Faversham, Kent ME13 7BH Tel: 01795 591462
E-mail: office@thephoenixtavernfavsham.co.uk
www.thephoenixtavernfavsham.co.uk

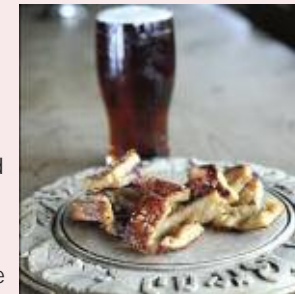


Featured in the Good Beer Guide 2012, this award winning pub with its lovely garden and large inglenook fires dates back to 1330. Situated in Abbey Street, one of the longest and oldest medieval streets in England, the Phoenix is a quintessential English pub at the heart of its community. Drinks on offer

include quality lagers, such as Peroni and Staropramen; wine from the royal warrant holders Corney and Barrow; and real ales from breweries large and small. Noted for its traditional food but especially its Beer, Bangers and Mash Nights, Gourmet Nights and other special events.

44 THE PLOUGH – Stalisfield Green, Kent ME13 0HY
Tel: 01795 890256 www.stalisfieldgreen.com

A real country inn, offering quality country dining or just a great place to meet friends for a sociable drink in the countryside. The menu features imaginative use of the best quality local produce whilst the drinks include some of Kent's best ales, lager, cider, wine and juices from the fruit of Kent's orchards. Previous winners of Kent's Best Pub, Kent's Best Restaurant, highly commended in The Countryside Alliance Local Food Awards 2010 and featured in The CamRA Good Beer Guide 2009, 2010, 2011.



45 THE PLOUGH INN – Lewson Street, Norton, Kent ME9 9JJ
Tel: 01795 521348
E-mail: millie.theplough@gmail.com
www.theploughatlewsonst.com

Dave and Millie warmly welcome you to the 13th century Plough at Lewson Street with its cosy bar and log fire in the inglenook. Sample the good beers and fine wines, dine in our candlelit restaurant, choose from our à la carte and bar menus or from the chef's daily specials.

FAVERSHAM FOOD & DRINK

46 POSILLIPO – Provender Mill, Belvedere Road, Faversham, Kent ME13 7LD Tel: 01795 590580 www.posillipo.co.uk



Posillipo Faversham, along with its sister restaurants in Broadstairs and Canterbury, offers a small piece of Naples within Kent. Our menu boasts a combination of fresh seafood, rustic pasta dishes and gourmet pizzas cooked in our handmade Neopolitan pizza oven. By using only the freshest ingredients and

locally sourced produce we ensure that you receive the best flavours and quality in all of our dishes. We offer a family friendly and relaxed atmosphere where the emphasis lies on great food, amazing wine and welcoming service.

47 THE RAJ – West Street, Faversham ME13 7JB Tel: 01795 590037/590052 Find us on faversham.org

Faversham's classic Indian restaurant, The Raj has, for more than 15 years, been offering a consistently fine range of Indian cuisine in traditional styles alongside its own special house dishes. Set in one of Faversham's many historic buildings, this family-run restaurant prides itself on providing good service and enjoyable and relaxed dining.



Banquet nights, Sunday buffet and full takeaway service. Opening times: Monday-Friday 5pm- 11.30pm, Saturday and Sunday 12 noon-2.30pm and 6pm-11.30pm.

48 SPICE LOUNGE – 76 Preston Street, Faversham ME13 8NU Tel: 01795 533322/533992 Find us on faversham.org



Spice Lounge has brought a new, contemporary style and standard to Indian cuisine, which is proving popular with discerning diners. With experience of working in the Taj Group of hotels in Madras, our chefs are amongst the finest in the world, skilled at preparing the exciting dishes of modern Indian cuisine plus all your old favourites.

49 SW DOUGHTY, FAMILY BUTCHERS The Street, Doddington, Kent ME9 0BH Tel: 01795 886255 www.swdoughty.co.uk



Traditional family run butcher's for almost 100 years that has repeatedly won the Countryside Alliance's Best Traditional Business award for the area. Doughty's has its own slaughterhouse and most of their meat comes from less than two miles away. Beef, lamb, pork, chicken and geese are all available as well as homemade cooked meats and prize winning sausages.

50 TIDDLY POMME – The Market Place, Brogdale Farm, Brogdale Road, Ospringe, Kent ME13 8XZ Tel: 01795 529100 E-mail: tiddlypomme@btinternet.com www.tiddlypommeshop.co.uk



Fresh and bottled ciders, wines, ales, juices, fruit-inspired gifts, books and much more! Try some of our very own 'Tiddly Pomme Real Cider', made using apples from the Brogdale orchards, or the award-winning, single-variety apple and pear juices, or 'Heritage Selection' apple juice which is made from some of the rarer varieties of apple grown at Brogdale.

faversham.org connect

DISCOVER

- 16 of the best visitor attractions in the UK
- 8 of the best country walks in Kent
- 2,000 years of fascinating history

ENJOY

- more than 30 places to eat and drink
- 100s of Faversham events every year
- 50 local clubs and societies

BROWSE

- more than 700 local businesses
- over 290 business categories



MARCH

24th – Faversham Choral Society Spring Concert, St. Mary of Charity
7.30pm. Tel: 01795 537167

APRIL

8th – Easter Egg Hunt, Belmont
Bring the family along to enjoy a day of fun, games and activities. Search for the Easter Bunnies in our beautiful gardens to claim your chocolate prize! Belmont House and Gardens, 11.00am – 4.00pm.
Tel: 01795 890228

8th – Easter Family Fun Day with Egg Hunt, Doddington Place Gardens
Tel: 01795 886101
www.doddingtonplacegardens.co.uk

13th – Murder Mystery Evening, Shepherd Neame Visitor Centre
Friday 13th is unlucky for some! Book a place and become one of Inspector Jager's rookies as she pieces together the evidence to crack the crime. Savour a superb four-course dinner in the brewery's 15th century function room – but keep your eyes peeled for clues and solve the mystery!
Tel: 01795 542285
www.shepherdeneame.co.uk

14th & 15th – Blossom Walk, Brogdale Farm,



Stroll through the orchards at this stunning time of year for truly breathtaking sights!
Tel: 01795 531888
www.brogdalionline.co.uk

21st – Oare String Orchestra
Tenor Adrian Goss sings Rubbra and Finzi. Programme includes music by Mozart, Elgar and Alan Ridout. Alexander Centre, Faversham at 7.30pm.
Tel: 01795 535209
www.oare-string-orchestra.org

MAY

6th – Faversham Charity Bike Ride, Recreation Ground
Registration from 9am, starts 11am from the Recreation Ground. Entry £5 or £10 family. Fancy Dress optional. Sponsorship forms from Alexander Centre.
Tel: 01795 535267

6th & 7th – Pat-A-Lamb, Mount Ephraim Gardens



Make friends with cuddly lambs and see Mount Ephraim in May when spring is in full swing and the 10 acres of gardens are bursting into bloom.
Tel: 01227 751496
www.mountephraingardens.co.uk

6th & 7th – Riddles Day, Doddington Place Gardens
Tel: 01795 886101
www.doddingtonplacegardens.co.uk

12th – Model Railway Exhibition, The Old Brewery Store @ Shepherd Neame
Model railways return to Faversham at Model Rail 2012. Up to 20 layouts and trade stands on display in this unique 'steam brewery' location.
Tel: 01795 542285
www.oldbrewerystore.co.uk

19th – Guided Garden Walk, Beech Court Gardens



Guided walk round the gardens including the Viburnum walk at 2.30pm. Hear about the history of the gardens and see rhododendrons and azaleas at their best. Tel: 01233 740735
www.beechcourtgardens.co.uk

19th & 20th – Travel Through Time, Faversham Transport Weekend

Bigger than ever for 2012
The famous Faversham Classic Car Show has been extended to a weekend-long event embracing all forms of historical vehicles and displays. On Saturday, dozens of omnibuses, charabancs, coaches and double-deckers will descend on Faversham while Sunday will see the colourful spectacle of hundreds of classic, vintage and veteran cars and motorcycles in the heart of the medieval market town. Wander around the town centre and admire the historic vehicles on display or browse in the speciality shops. Alternatively, hop aboard one of the restored buses running both days to and from local places of interest, including Macknade Fine Foods and the National Fruit Collections at Brogdale Farm. Both locations will have special displays over the two-days. On Sunday, don't miss the plethora of trade stands and stalls throughout the town centre, the children's funfair or the legendary Spitfire steam trains.



Tel: 01795 542285
www.faversham.org/carshow

20th – "The Spitfire" Steam Trains



A truly nostalgic day out: travel in style from London aboard an express steam train and enjoy the vibrant Car and Motorcycle Show. A local afternoon trip from Faversham is also available.
Tel: 01795 542285

JUNE

3rd – 5th – Diamond Jubilee Fun Days Doddington Place Gardens
Includes a Farmers' Market on Saturday. Tel: 01795 886101
www.doddingtonplacegardens.co.uk

16th & 17th – The Secret Gardens of Faversham



Private gardens not usually seen, open for public viewing 1pm-5pm. Admission by programme £7.50 + postage, from 1 May from Fleur de Lis Heritage Centre. Tel: 01795 534542

16th – 24th – Faversham Festival 2012

Faversham Festival welcomes you to our celebration of talent. Nine days of evening concerts, free open air concerts, exhibitions, crafts, drama, dance and music. Details on www.favershamfestival.com
E-mail: graham@favershamfestival.co.uk
Tel: 07902355976

17th – Fathers' Day Brewery Tours with Lunch or Tea, Shepherd Neame Visitor Centre



An unbeatable present for Dad! Enjoy a tour of Britain's Oldest Brewer followed by a tutored tasting and a pint or two over a traditional Sunday lunch or a sumptuous, homemade Brewers' Tea. Advance booking essential.
Tel: 01795 542285

23rd – An Evening with Cameo Opera, The Old Brewery Store @ Shepherd Neame

An evening packed with drama and fun, featuring operatic favourites performed by Kent's own Cameo Opera Company.
Tel: 01795 542285
www.oldbrewerystore.co.uk

24th – She Stoops to Conquer, Beech Court Gardens
By D.O.T. Productions.
Performance starts at 2.30pm.
Tel: 01233 740735
www.beechcourtgardens.co.uk

24th – Soft Fruit Day, Brogdale Farm
Experience berries beyond belief to kick start the fruit season at Brogdale.
Tel: 01795 531888
www.brogdaleonline.co.uk

JULY

1st – Cherry Day, Mount Ephraim Gardens



Sample some of the best cherries in the county on a real country farm.
Tel: 01227 751496
www.mountephraingardens.co.uk

7th & 8th – Cherry Festival, Brogdale Farm
A day out for all the family with lots of tasty treats and festival fun.
Tel: 01795 531888
www.brogdaleonline.co.uk

7th, 14th & 21st – Open House, Faversham

The Open House scheme, now in its 43rd year, is the longest-running event of its kind in Great Britain.
Historic properties not usually seen open for public viewing

10am-4.30pm. Entrance by a handbook on sale from June from the Fleur de Lis Heritage Centre.
Tel: 01795 534542

8th – Artists in the Woods, Oare Gunpowder Works Country Park

Off Bysingwood Road, Oare ME13 7QA
Workshops, demos, music, art, poetry, painting, carving, modelling. Free parking is available. All set within a country park and woodland, with walks and talks in the historic setting. This event is run in association with The Swale Arts Forum and the Friends of Oare Gunpowder Works. Refreshments available. 10am – 3pm

13th – 15th – Davington Church Flower Festival



Exquisite floral decorations in historic and beautiful Davington parish church. With refreshments, stalls and local crafts. 10am – 4pm Friday and Saturday, 11am – 4pm Sunday.

15th – Have A Go Falconry, Doddington Place Gardens
Tel: 01795 886101
www.doddingtonplacegardens.co.uk

19th – Olympic Torch Relay
The Olympic Flame will be carried by Torchbearers through Faversham on its journey round Britain en-route to the London Games. See favfersham.org for updates and details of the town's celebrations.

29th – Jazz in the Gardens, Doddington Place Gardens
Tel: 01795 886101
www.doddingtonplacegardens.co.uk

AUGUST

4th – Hydrangea Walk, Beech Court Gardens
Guided garden walk at 2.30pm.
Tel: 01233 740735
www.beechcourtgardens.co.uk

12th – Classic Car Show, Beech Court Gardens



Classic car show and craft stalls, 10.30am-5pm. Tel: 01233 740735
www.beechcourtgardens.co.uk

12th – Plum Day, Brogdale Farm
Over 350 delicious plums to explore – a taste experience to remember!
Tel: 01795 531888
www.brogdaleonline.co.uk

19th – Creepy Crawlies, Doddington Place Gardens
Tel: 01795 886101
www.doddingtonplacegardens.co.uk

27th – The Importance of Being Ernest, Mount Ephraim Gardens
Enjoy The Importance of Being Ernest performed by the brilliant Pantaloons in the gardens of Mount Ephraim. Advance booking essential.
Tel: 01227 751496
www.mountephraingardens.co.uk

SEPTEMBER

1st & 2nd – Faversham Hop Festival



The carnival atmosphere of the hop harvest lives on at the annual Faversham Hop Festival, now in its 23rd year. This popular, colourful festival features street entertainers, a myriad of musical acts, puppet shows for the young (and young at heart), stalls and hops galore.
www.favershamhopfestival.org

1st – “The Spitfire” Hop Pickers Steam Trains

Make tracks to Faversham aboard the famous ‘Spitfire’ steam train as Britain’s oldest brewer conjures up the atmosphere of the Hop Pickers Specials aboard which Londoners once travelled to Kent for the September harvest. A local afternoon trip will run for festival-goers wishing to take a short trip behind steam. Advance booking essential. Tel: 01795 542285
www.shepherdneame.co.uk

16th – Mount Ephraim ‘Apple Sunday’
Join in the apple harvest celebrations on the family farm with apple pressing demonstrations.
Tel: 01227 751496
www.mountephraingardens.co.uk

16th – Nut Day, Brogdale Farm
A cracking time to visit Brogdale and try something new.
Tel: 01795 531888
www.brogdaleonline.co.uk

16th – Have A Go Falconry, Doddington Place Gardens
Plus a talk on Doddington Life
Tel: 01795 886101
www.doddingtonplacegardens.co.uk

22nd & 23rd – Cider & Food Festival, Brogdale Farm
Celebrate cider at Brogdale and enjoy quality local food, drink and music. Tel: 01795 531888
www.brogdaleonline.co.uk

29th – Oare String Orchestra Composing Competition finals with Martin Outram (viola). Programme includes music by Holst, Stephen Dankner and Harry Wild. Queen Elizabeth’s School, Faversham at 7.30pm
Tel: 01795 535209
www.oare-string-orchestra.org

OCTOBER

13th – Faversham Carnival
A whole day of fun and entertainment. Carnival procession 6.30pm through Faversham town centre.
Tel: 01795 538747
www.favershamcarnival.com

13th & 14th, 20th & 21st, 27th & 28th – Artists Open Houses
Featuring more than 180 artists. Experience a diverse array of high quality work from artists in Faversham, Canterbury, Herne Bay & Whitstable. 11am – 4pm.
Tel: 01795 535515

20th & 21st – Apple Festival, Brogdale Farm



Don’t miss our annual Apple Festival, celebrating over 2,200 different varieties with lots for all the family to do. Tel: 01795 531888
www.brogdaleonline.co.uk

27th – Ghost Tours, Shepherd Neame Visitor Centre
As Britain’s oldest brewer, Shepherd Neame has a few ‘old’ friends. Find out about unexplained happenings and sightings as actors bring some of the ghostly tales to life on our special Hallowe’en tours. Evening tours followed by a superb two-course Hallowe’en-themed dinner also available. Advance booking recommended. Tel: 01795 542285
www.shepherdneame.co.uk

NOVEMBER

3rd – Doddington Fireworks Display, Palace Farm, Doddington
Gates open 5.30, bonfire from 6.30pm, main fireworks display 7pm. Tel: 01795 886332

17th – Murder Mystery Evening, Shepherd Neame Visitor Centre

Savour a superb four-course dinner in the brewery's 15th century function room and examine the scene of the crime with Inspector Jager. Will you successfully apprehend the culprit? Tel: 01795 542285
www.shepherdeneame.co.uk

24th – Christmas Beer & Local Food Festival, The Old Brewery Store @ Shepherd Neame

Start the festive season early by sampling, enjoying and buying Kent's finest local produce, together with our acclaimed ales and lagers. 10.30am – 4.30pm
Tel: 01795 542285
www.oldbrewerystore.co.uk

24th – Switch on of Faversham's Christmas Lights



Come and see our historic market town lit up with wonderful Christmas lights and support our individual shops. Market Place Faversham from 5.00pm.
Tel: 07940 478683

DECEMBER

16th – A Christmas Carol, Mount Ephraim



A Christmas Carol inside Mount Ephraim House performed by The Pantaloons. Advance booking essential. Tel: 01227 751496
www.mountephraingardens.co.uk

ATTRACTIONS

- 1 Beech Court Gardens
- 2 Belmont House & Gardens
- 3 Brogdale Collections
- 4 Chart Gunpowder Mills
- 5 Creek Creative
- 6 Doddington Place Gardens
- 7 Farming World
- 8 Faversham Pools
- 9 Fleur de Lis
- 10 Grow at Brogdale
- 11 Macknade Fine Foods
- 12 Maison Dieu
- 13 Mount Ephraim Gardens
- 14 Oare Gunpowder Works
- 15 Sandhurst Farm Forge
- 16 Shepherd Neame Brewery Tours
- 17 Shrine of St Jude
- 18 Thames Sailing Barge Greta

WHERE TO STAY

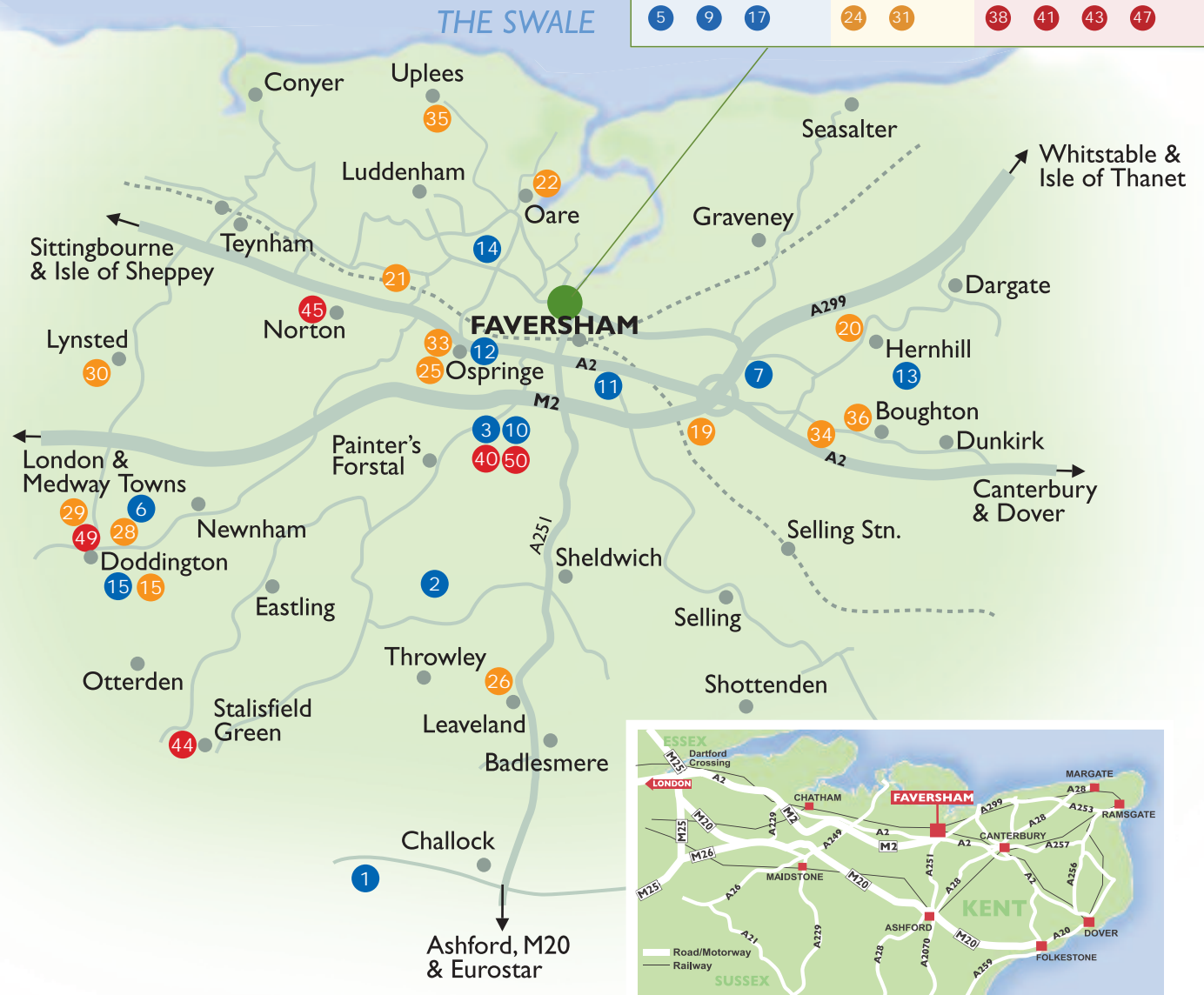
- 19 Brenley Farmhouse B&B
- 20 Church Oast B&B
- 21 Cot Hoy self-catering
- 22 Court Lodge B&B
- 23 Fairlea B&B
- 24 Gladstone House B&B
- 25 Judd's Folly Hotel
- 26 Leaveland Court
- 27 March Cottage
- 28 The Old Vicarage
- 29 Palace Farm Hostel
- 30 Peninsular Terrace at the Black Lion
- 31 Railway Hotel
- 32 Sun Inn
- 33 Syndale Lodge B&B
- 34 Tenterden House
- 35 Uplees Farm
- 36 White Horse Inn

FOOD & DRINK

- | | | |
|----------------------------------|-----------------------|--------------------------------|
| 37 Albion Taverna | 41 The Elephant | 46 Posillipo |
| 38 The Anchor Inn | 42 Ossie's Fish Bar | 47 The Raj |
| 39 The Carriage Restaurant | 43 The Phoenix Tavern | 48 Spice Lounge |
| 40 The Courtyard Restaurant Café | 44 The Plough | 49 SW Doughty, Family Butchers |
| | 45 The Plough Inn | 50 Tiddy Pomme |

TOWN CENTRE – BUSINESSES

- | | | | | | | | | | | | |
|---|---|----|----|----|----|----|----|----|----|----|----|
| 4 | 8 | 16 | 18 | 23 | 27 | 32 | 37 | 39 | 42 | 46 | 48 |
| 5 | 9 | 17 | | 24 | 31 | | 38 | 41 | 43 | 47 | |



KEY

-  Semi-pedestrianised area
-  Footpaths
-  Places mentioned in this leaflet

PLACES OF INTEREST

- A** Stonebridge Pond
- B** West Street
- C** TS Hazard
- D** Faversham Creek
- E** Boats and sailing barges
- F** Arden's House
- G** Abbey Street
- H** Tudor grammar school
- I** Court Street
- J** Guildhall
- K** Royal Cinema
- L** Public lavatories
- M** Arden Theatre
- N** Recreation Ground
- O** Cottage Hospital
- P** Council offices (Alexander Centre)
- Q** Post Office
- R** Library
- S** Police Station

